



5 New Road, Lymm, WA13 9DX

£385,000



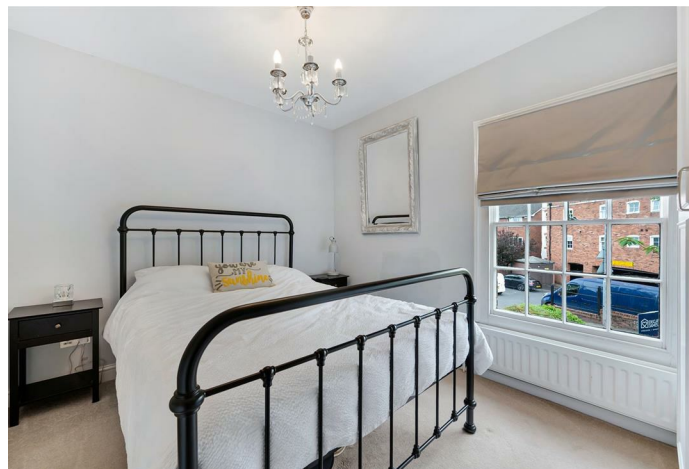
5 New Road, Lymm, WA13 9DX

£385,000

SOLD SOLD SOLD BEFORE GOING TO THE MARKET.

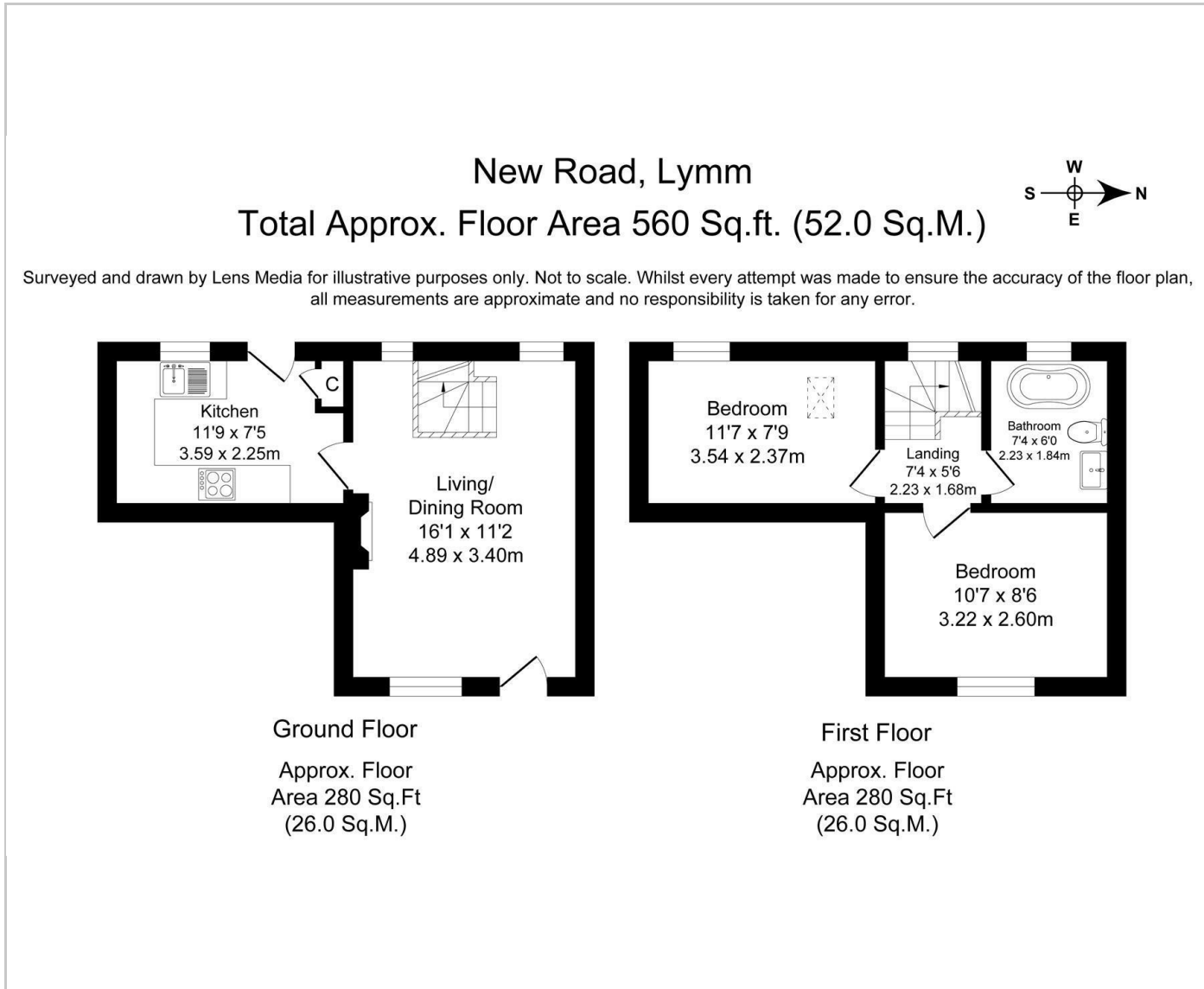
Grade II listed beautiful cottage in the centre of Lymm comprising a lounge with beams, original floorboards and feature fireplace and kitchen to the rear. Upstairs there are two double bedrooms and a bathroom. Externally there is a cottage garden to the front and fabulous courtyard situated in the centre of Lymm village very close to the Bridgewater Canal.

Description

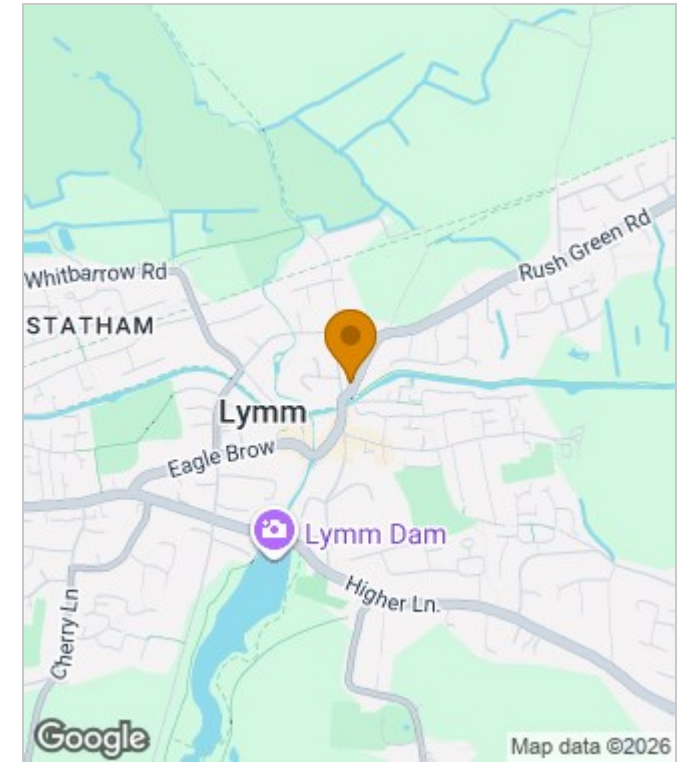


Council Tax Band:

Floor Plans



Area Map



Energy Performance Graph

Energy Efficiency Rating		Current	Potential
Very energy efficient - lower running costs			
(92 plus) A			
(81-91) B			
(69-80) C			
(55-68) D			
(39-54) E			
(21-38) F			
(1-20) G			
Not energy efficient - higher running costs			
England & Wales	EU Directive 2002/91/EC		

These particulars, whilst believed to be accurate are set out as a general outline only for guidance and do not constitute any part of an offer or contract. Intending purchasers should not rely on them as statements of representation of fact, but must satisfy themselves by inspection or otherwise as to their accuracy. No person in this firm's employment has the authority to make or give any representation or warranty in respect of the property.